

FOR LOADS OF 35 TO 80 lbf

PHONE: 516.328.3300 • FAX: 516.326.8827 • WWW.SDP-SI.COM

> MATERIAL:

Natural Rubber

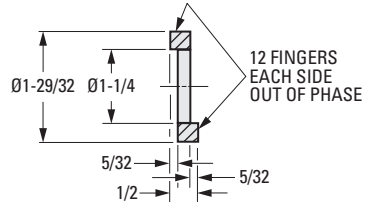
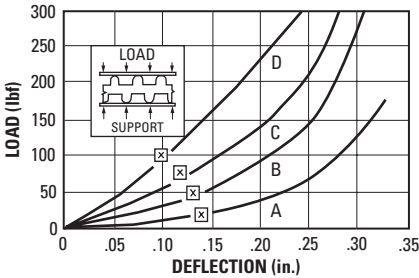
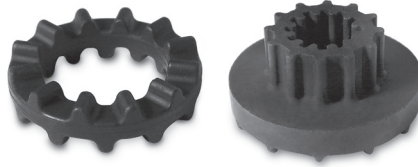


Fig. 1 Ring Style

Deflections below the X are considered safe practice for static loads; data above the X are useful for calculating deflections under dynamic loads.

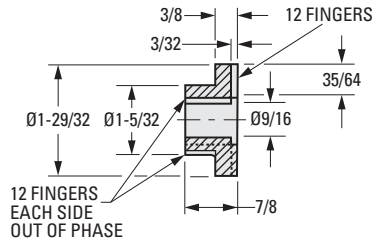
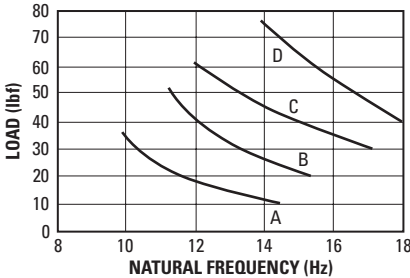


Fig. 2 Bushing Style

INCH COMPONENT

Catalog Number	Hardness Durometer	Compression Max. Load lbf	Forcing Frequency in Cycles per Minute				
			1500	1750	2000	2250	2500
Minimum Load for 81% Isolation (lbf)							
Fig. 1							
A10R 4-1506A	30	35	30	17	13	10	8
A10R 4-1506B	40	50	50	24	18	14	12
A10R 4-1506C	50	65	—	40	31	24	20
A10R 4-1506D	60	80	—	76	56	43	33
Fig. 2							
A10R 4-1507A	30	35	30	17	13	10	8
A10R 4-1507B	40	50	50	24	18	14	12
A10R 4-1507C	50	65	—	40	31	24	20
A10R 4-1507D	60	80	—	76	56	43	33

I
R
T
1
2
3
4
5
6
7
8
9
10
11
12
13
14
15
16