

► **MATERIAL:**

Base - Cast Aluminum, Black Anodized
Shaft - Stainless Steel

► **FEATURES:**

Ball bearings used throughout.
 Unit furnished with four miniature, single-pole double-throw switches.
 Two adjusting screws permit the simple accurate adjustment of the miniature switch actuators.
 The Limit Stop also has an adjustable spring-loaded mechanical stop incorporated to prevent damage from overriding.
 Especially designed with a pilot diameter to permit servo type mounting.
 Four clamps with #2-56 Fillister Head screws are supplied for mounting.

► **SWITCH DATA:**

5 amps 250V AC
 Rating at 30V DC:
Inductive: 3 amps at sea level and 2.5 amps at 50,000 feet;
Resistive: 5 amps at sea level and 50,000 feet;
 Maximum inrush 24 amps.

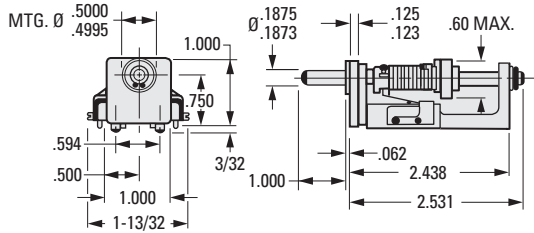
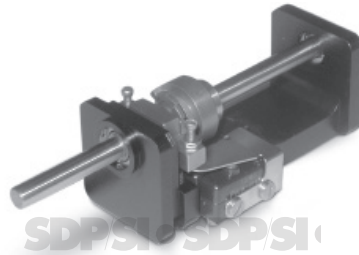
► **WORKING RANGE:**

0° to the adjustable rotation limit, in degrees.

► **MAX. TORQUE CAPACITY:**

150 ozf in.

Shaft length other than standard 1 in. can be furnished on special order.



INCH COMPONENT CATALOG NUMBER

S 9 2 0 0 A - G 1 6 3 -

Insert Model No. from table below.

Example: S9200A-G163-02 has a 450° – 750° rotation limit.

Model No.	Rotation Limit Degrees
00	0 – 150
01	150 – 450
02	450 – 750
03	750 – 1050
04	1050 – 1350
05	1350 – 1650
06	1650 – 1950
07	1950 – 2250
08	2250 – 2550
09	2550 – 2850
10	2850 – 3150
11	3150 – 3450
12	3450 – 3750
13	3750 – 4050
14	4050 – 4350
15	4350 – 4650
16	4650 – 4950

Model No.	Rotation Limit Degrees
17	4950 – 5250
18	5250 – 5550
19	5550 – 5850
20	5850 – 6150
21	6150 – 6450
22	6450 – 6750
23	6750 – 7050
24	7050 – 7350
25	7350 – 7650
26	7650 – 7950
27	7950 – 8250
28	8250 – 8550
29	8550 – 8850
30	8850 – 9150
31	9150 – 9450
32	9450 – 9750
33	9750 – 10050

Model No.	Rotation Limit Degrees
34	10050 – 10350
35	10350 – 10650
36	10650 – 10950
37	10950 – 11250
38	11250 – 11550
39	11550 – 11850
40	11850 – 12150
41	12150 – 12450
42	12450 – 12750
43	12750 – 13050
44	13050 – 13350
45	13350 – 13650
46	13650 – 13950
47	13950 – 14250
48	14250 – 14550
49	14550 – 14850
50	14850 – 15150