

■ MOLDED

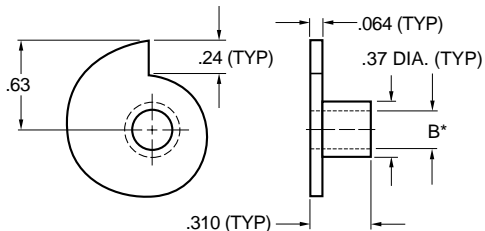


Fig. 1

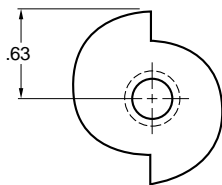
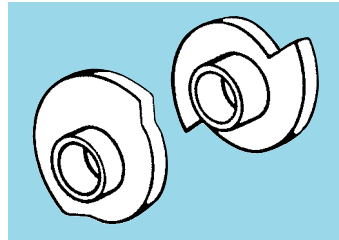


Fig. 2

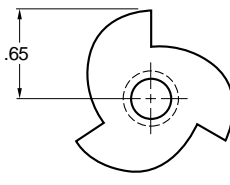


Fig. 3

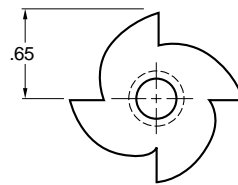


Fig. 4

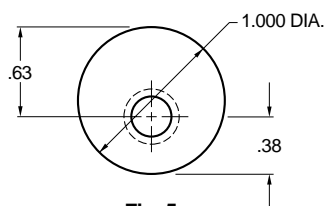


Fig. 5

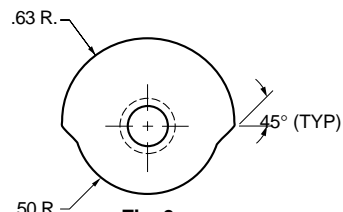


Fig. 6

MATERIAL: Acetal, Black

Catalog Number	Fig. No.	B* Bore	Rise per 15°
A 3Y 3-1M08	1	1/4	.010
A 3Y 3-2M08	2		.020
A 3Y 3-3M08	3		.030
A 3Y 3-4M08	4		.040
A 3Y 3-5M08	5		—
A 3Y 3-6M08	6		—

*Bore is sized for press fit on standard shafting. Use straight knurl for maximum torques.

Special bore sizes available on request.