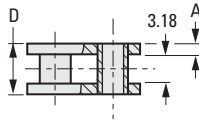


STANDARD DUTY  
HEAVY-DUTY  
SINGLE STRAND  
RIVETED

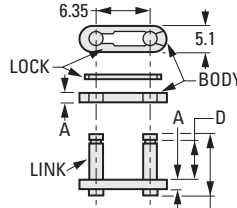
PHONE: 516.328.3300 • FAX: 516.326.8827 • WWW.SDP-SI.COM



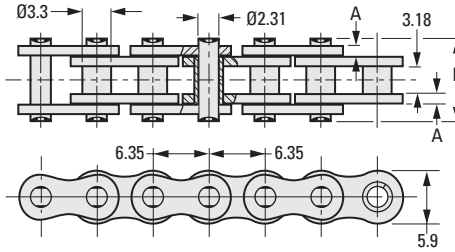
**> MATERIAL:**  
Stainless Steel  
Hardened Steel



**Fig. 1**  
**Roller Connecting Link**



**Fig. 2**  
**Spring Clip Connecting Link**



**METRIC COMPONENT**

Catalog Number	Material	A Thickness	D	E	F	Tensile Load N	Weight Per Meter kg / m
<b>Roller Chain - Standard-Duty Type - Priced Per Meter</b>							
A 6Q 7M25	Hardened Steel	.78	4.8	7.8	8.4	3500	0.13
A 6Y 7M25	Stainless Steel					2500	

Roller Chain (Ref.)	Material	Roller (Fig. 1)	Spring Clip (Fig. 2)
<b>Connecting Links - For Standard-Duty Type Chain - Priced Per Piece</b>			
A 6Q 7M25	Hardened Steel	A 6Q 7M25RL	A 6Q 7M25SCCL
A 6Y 7M25	Stainless Steel	A 6Y 7M25RL	A 6Y 7M25SCCL

**METRIC COMPONENT**

Catalog Number	Material	A Thickness	D	E	F	Tensile Load N	Weight Per Meter kg / m
<b>Roller Chain - Heavy-Duty Type - Priced Per Meter</b>							
A 6Q 7MH25	Hardened Steel	1.03	5.35	8.9	9.7	5200	0.16
A 6Y 7MH25	Stainless Steel					2500	

Roller Chain (Ref.)	Material	Roller (Fig. 1)	Spring Clip (Fig. 2)
<b>Connecting Links - For Heavy-Duty Type Chain - Priced Per Piece</b>			
A 6Q 7MH25	Hardened Steel	A 6Q 7MH25RL	A 6Q 7MH25SCCL
A 6Y 7MH25	Stainless Steel	A 6Y 7MH25RL	A 6Y 7MH25SCCL

