

D815 P2-226
 D805 P2-221
 D785 P2-190 D210 P5-6
 D780 P2-181 757 P562
 D777 P2-143 762 P193

A 6(C,B,Y,M,Z) 8M-X
 P2 of 5
 3-12-91
 REV: 3.7.24 LP



LADDER CHAINS & SPROCKETS • 4.24 mm PITCH



SIZE 21
MOLDED WITH METAL INSERT
1.7 mm FACE

PHONE: 516.328.3300 • FAX: 516.326.8827 • WWW.SDP-SI.COM

› MATERIAL:

Ladder Chain - Galvanized Steel, High-Tensile Steel
 or Stainless Steel
 Sprockets - Acetal, Black
 Insert - Brass, Knurled

› SPECIFICATION:

Sprockets with:
 3 mm & 4 mm bore have an M2.5 set screw & spot drill.
 5 mm & 6 mm bore have an M3 set screw & spot drill.

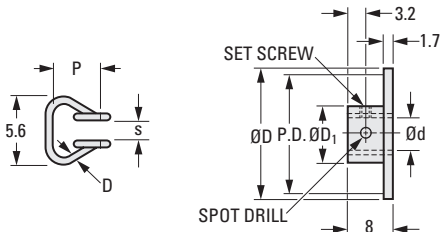


Fig. 1

Fig. 2

METRIC COMPONENT

Catalog Number	Material	P Pitch	Links Per Meter	D Wire Dia.	s Inside Width	Yield Point N
Fig. 1 Ladder Chains - Priced Per Meter						
A 6C 8M21	Steel, Galvanized	4.24	236	0.8	2	78
A 6C88M21	High-Tensile Steel, Zinc Plated (non-RoHS)					157
A 6Y 8M21	Stainless Steel, 300 Series					78

Catalog Number	No. of Teeth	P.D.	D Dia.	d Bore Dia. +0.025 0	D ₁ Hub Dia.
Fig. 2 Sprockets					
A 6Z 8M211204	12	16.4	19.8	4	9.4
A 6Z 8M211403	14	19	22.3	3	
A 6Z 8M211805	18	24.4	27.7	5	12.5
A 6Z 8M212406	24	32.4	35.8	6	
A 6Z 8M212506	25	33.8	37.1	6	
A 6Z 8M213005	30	40.5	44	5	
A 6Z 8M213006	30	40.5	44	6	
A 6Z 8M213605	36	48.6	52.1	5	
A 6Z 8M214006	40	54	57.4	6	

- I
- R
- T
- 1
- 2**
- 3
- 4
- 5
- 6
- 7
- 8
- 9
- 10
- 11
- 12
- 13
- 14
- 15
- 16

