

PATENTED  
MINIATURE  
SYNCHRONOUS

PHONE: 516.328.3300 • FAX: 516.326.8827 • WWW.SDP-SI.COM



**> MATERIAL:**

- Cable Core - Stainless Steel 304
- Cable Casing - Nylon

**> SPECIFICATIONS:**

**Life Data:**

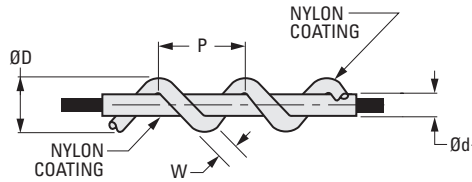
- 10<sup>6</sup> minimum flexing cycles where:
- Pulley Pitch Radius (R) = 2 x P

**Accuracy:**

- Pitch Error ± 0.05 mm
- Cumulative Pitch Error ± 4.07 mm max. over 100 pitches.

**Ambient Factors:**

- Temperature Range: -30°C to +80°C
- Avoid strong acids, alkalies and organic solvents.



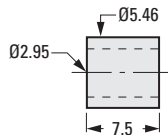
### METRIC COMPONENT

Catalog Number	P Pitch	D Outside Dia. mm	D <sub>1</sub> Dia.	W	Breaking Load N
<b>Priced Per Meter</b>					
A 6J 9MAS0605	3.048	1.6	0.6	0.6	160
A 6J 9MAS0805	3.81	2.2	0.8	0.8	323.4
A 6J 9MAS1005	5.08	2.8	1	1	529.2
A 6J 9MAS1209	6.35	3.4	1.2	1.2	784.5

**PLUGS** - Annealed Brass

### METRIC COMPONENT

Catalog Number
<b>Priced per 10 pieces</b>
A 6J 9MB103

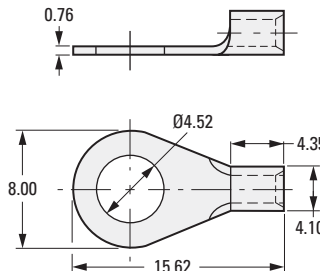


**EYES** - Steel, Nickel Plated

**NOTE:** Universal eyes fit all cable sizes and provide for convenient screw mounting.

### METRIC COMPONENT

Catalog Number
<b>Priced per 10 pieces</b>
A 6J 9MAA39



The projections shown are per ISO convention.