

CYLINDRICAL MOUNTINGS • TO 48 kgf



FOR COMPRESSION LOADS OF 21 TO 48 kgf
SHEAR LOADS OF 12 TO 30 kgf

PHONE: 516.328.3300 • FAX: 516.326.8827 • WWW.SDP-SI.COM

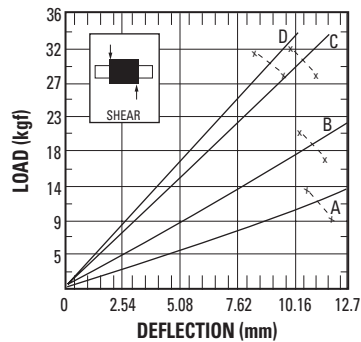
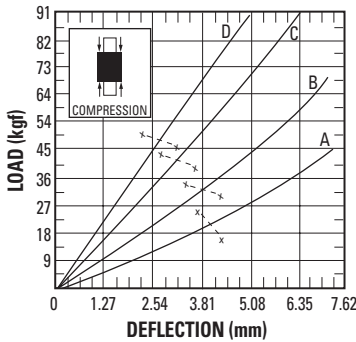
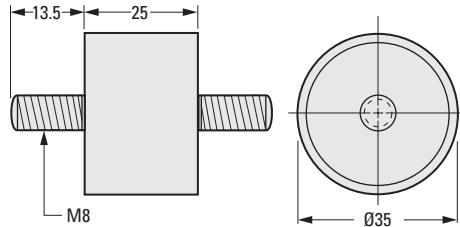


► MATERIAL / FINISH:

Fastener - Steel, Zinc Plated
Isolator - Natural Rubber

► LOAD DEFLECTION GRAPHS:

Deflections below the line x-x are considered safe practice for static loads; data above that line are useful for calculating deflections under dynamic loads.



METRIC COMPONENT CATALOG NUMBER

A 1 0 Z 2 M 3 1 1 M 0 8

Load Rating
A, B, C or D

Compression		Forcing Frequency in Cycles per Minute									
Load Rating	Maximum Load kgf	700	850	1100	1250	1500	1750	2000	2250	2500	3000
		Minimum Load for 81% Isolation (kgf)									
A	21.3	-	-	-	20.2	13.6	10	8.2	6.1	5	-
B	33.6	-	-	-	32.9	22	16.1	12.3	9.5	7.9	5.7
C	43.5	-	-	-	-	34.3	25.5	19.5	15.4	12.7	8.8
D	47.6	-	-	-	-	45.4	33.1	25.6	20.4	17.2	11.6

Shear		Forcing Frequency in Cycles per Minute									
Load Rating	Maximum Load kgf	700	850	1100	1250	1500	1750	2000	2250	2500	3000
		Minimum Load for 81% Isolation (kgf)									
A	12.3	12.3	8.8	5.2	4.1	2.7	*	*	*	*	*
B	18.6	-	14.1	8.6	6.6	4.8	3.6	*	*	*	*
C	29.9	-	24.3	15	12	8.6	6.4	5.2	4.1	*	*
D	29.9	-	27.7	17.2	13.8	10	8.8	5.9	4.8	3.9	*

*At these forcing frequencies, lesser loads will yield 81% isolation.

8-16
D805

I

R

T

1

2

3

4

5

6

7

8

9

10

11

12

13

14

15

A