

CYLINDRICAL MOUNTINGS • TO 95 kgf



FOR COMPRESSION LOADS OF 43 TO 95 kgf
 NOT RECOMMENDED FOR STATIC SHEAR LOADS

PHONE: 516.328.3300 • FAX: 516.326.8827 • WWW.SDP-SI.COM

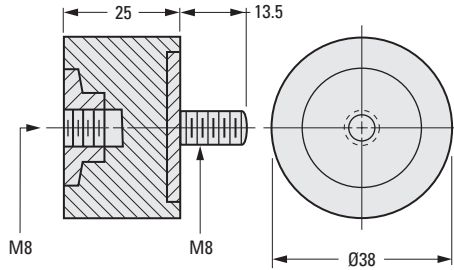
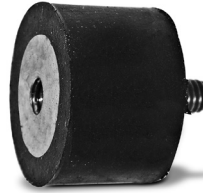


► **MATERIAL / FINISH:**

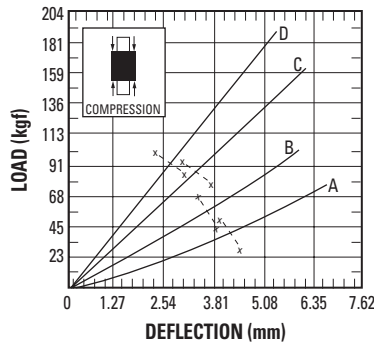
Fastener - Steel, Zinc Plated
Isolator - Natural Rubber

► **LOAD DEFLECTION GRAPHS:**

Deflections below the line x-x are considered safe practice for static loads; data above that line are useful for calculating deflections under dynamic loads.



The projections shown are per ISO convention.



METRIC COMPONENT CATALOG NUMBER

A 1 0 Z 2 M 3 0 8 M 0 8

Load Rating
 A, B, C or D

Compression		Forcing Frequency in Cycles per Minute						
Load Rating	Maximum Load kgf	1150	1250	1500	1750	2000	2750	3500
		Minimum Load for 81% Isolation (kgf)						
A	43.1	43.1	36.3	25	18.2	13.6	6.8	–
B	61.2	–	56.7	38.6	27.2	20.4	10	–
C	83.9	–	–	63.5	45.4	34	18.2	11.3
D	95.3	–	–	83.9	61.2	47.6	25	15.9

- I
- R
- T
- 1
- 2
- 3
- 4
- 5
- 6
- 7
- 8
- 9
- 10
- 11
- 12
- 13
- 14
- 15
- A