

SIZES 0, 1, 2  
EASY INSTALLATION  
ADJUSTABLE OR STATIONARY

PHONE: 516.328.3300 • FAX: 516.326.8827 • WWW.SDP-SI.COM

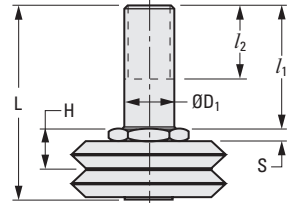
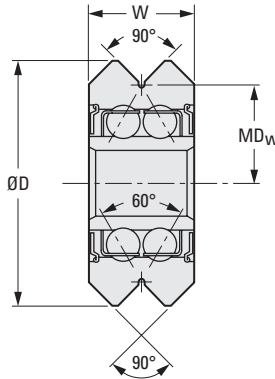
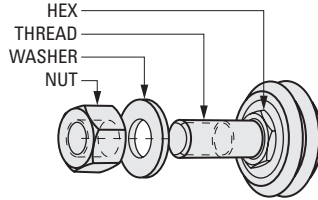
**> MATERIAL:**

- Wheel** - Steel SAE 52100
- Bearing** - Pre-lubricated - Sealed (Size 0)  
Shielded (Size 1 & 2)
- Nuts** - DIN 934 (18-8 Stainless Steel)
- Washer** - DIN 125 (18-8 Stainless Steel)

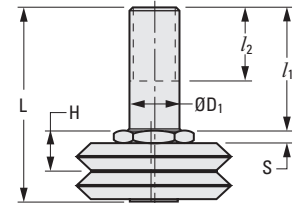


0 10

DUALVEE®



Stationary Stud



Adjustable Stud

**METRIC COMPONENT**

Catalog Number	Size	EC Offset ± 0.13	L Overall Length	D <sub>1</sub> Journal Dia. 0 -0.02	l <sub>1</sub> Journal Length	l <sub>2</sub> Thread Length	Thread	S Shoulder Thick. ± 0.03	H Vee Height ± 0.05
A 7Q17M0STA	0	—	18.8	3.98	9.9	6.1	M4 x 0.7	2	5.2
A 7Q17M0ADJ	0	0.3	18.8	3.98	9.9	6.1	M4 x 0.7	2	5.2
A 7Q17M1STA	1	—	25.4	5.97	15	8.9	M6 x 1	2.1	6
A 7Q17M1ADJ	1	0.4	25.4	5.97	15	8.9	M6 x 1	2.1	6
A 7Q17M2STA	2	—	39.1	9.97	24.9	15	M10 x 1.5	2.6	8.2
A 7Q17M2ADJ	2	0.6	39.1	9.97	24.9	15	M10 x 1.5	2.6	8.2

Catalog Number (Ref.)	Hex Size	Nut and Washer	D Dia.	W 0 -0.12	MDw	Static Radial Load Rating N	Dynamic Radial Load Rating N	Static Axial Load Rating N	Dynamic Axial Load Rating N
A 7Q17M0STA	11	M4	14.83	6.35	5.94	500	1050	470	530
A 7Q17M0ADJ	11	M4	14.83	6.35	5.94	500	1050	470	530
A 7Q17M1STA	12	M6	19.68	7.87	7.95	1110	2180	1040	1090
A 7Q17M1ADJ	12	M6	19.68	7.87	7.95	1110	2180	1040	1090
A 7Q17M2STA	14	M10	30.73	11.13	12.7	2780	4700	2630	2380
A 7Q17M2ADJ	14	M10	30.73	11.13	12.7	2780	4700	2630	2380

**NOTE:** Load ratings are according to AFBMA STD9-1990.