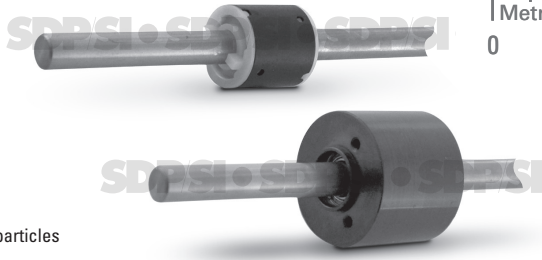


MAGNETIC PARTICLE SLIP CLUTCHES WITH SHAFT

SDP/SI

ZERO MAINTENANCE
EASY INSTALLATION
CONSTANT TORQUE LEVELS
INTEGRAL SHAFT

PHONE: 516.328.3300 • FAX: 516.326.8827 • WWW.SDP-SI.COM



> MATERIAL:

- Shell - Steel
- End Caps - Plastic
- Shafts - Steel

> FEATURES:

- Requires no power
- Uses permanent magnets and magnetic particles
- Long operational life
- Sealed from contamination

*Optional torques available only by special order.

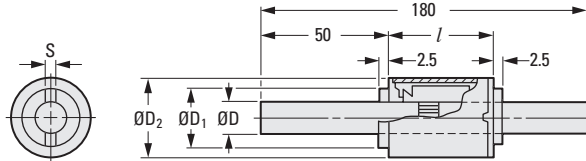


Fig. 1

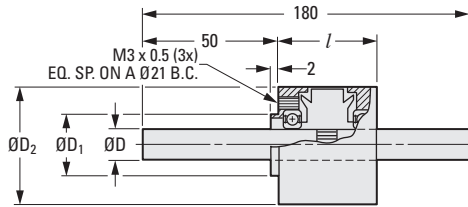


Fig. 2

METRIC COMPONENT

Catalog Number	D Shaft Dia. 0 -0.03	D ₁ Hub Dia.	D ₂	S	l	Max. Allowable Speed rpm	Torque ± 10% Nominal	
							Static N • m	Opt. Range* N • m
Fig. 1 Plastic Bearings								
S90BPLMP08030025	8	15	20	2.4	20	300	0.030	0.019 - 0.040
S90BPLMP08060025							0.060	0.040 - 0.060
S90BPLMP08120032	8	15	20	2.4	27	250	0.120	0.060 - 0.120
S90BPLMP08181039							0.181	0.120 - 0.181
Fig. 2 Ball Bearings								
S90BPLMS08099028	8	15	32	—	26	400	0.099	0.070 - 0.099
S90BPLMS08150028							0.150	0.099 - 0.150
S90BPLMS08199035	8	15	32	—	33	300	0.199	0.150 - 0.199
S90BPLMS08301035							0.301	0.199 - 0.301
S90BPLMS08398042	8	15	32	—	40	200	0.398	0.301 - 0.398

NOTE: When the slip clutch is to be subjected to any radial or axial thrust, use of the ball bearing design is required. Units should be used on horizontal shafts only.

- I
- R
- T
- 1
- 2
- 3
- 4
- 5
- 6
- 7
- 8
- 9
- 10
- 11
- 12
- 13
- 14
- 15
- A