

> FEATURES:

- Long life under continuous slip conditions
- Unidirectional or bidirectional operation
- Same or different clockwise and counterclockwise torques
- Precise and stable limit torque calibration (range: 0.007 to 4.24 N • m)
- Same torque at breakaway as at high slip velocities
- Mounting provisions for gear, sprocket or pulley
- Corrosion-resistant materials

PHONE: 516.328.3300 • FAX: 516.326.8827 • WWW.SDP-SI.COM



> APPLICATIONS:

- Tension control of film or tape drives
- Transmission overload protection

> SPECIAL DESIGNS:

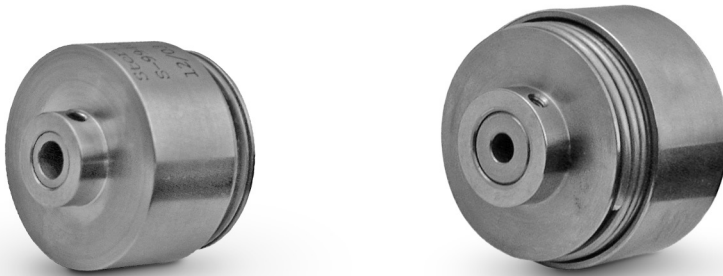
The standard line of slip elements provides a wide selection of limit torques, sizes and coupling arrangements. In addition, our engineers will modify designs to meet your specific requirements in such areas as:

- Configuration
- Driving arrangement
- Limit torques from a fraction of a N • cm to many N • m's
- Calibration of torque to a tolerance of $\pm 5\%$
- Different limit torques for the two directions of rotation
- Spring windup and limit torque combination. The spring action of the slip element is useful for tensioning of tape and prevention of slack loops.

*Stock units are calibrated with equal clockwise and counterclockwise slip torques corresponding to the tabulated Upper Limit Torques. Other torques are readily available from full, down to 1/8 of the Upper Limit Torque for each model. Torque values are independent of each other for clockwise and counterclockwise rotation, and may be specified the same or different for the two directions.

**All clutches in this series have a pilot diameter "D₃" and three tapped holes "T₁" for mounting a gear, sprocket or pulley on the input hub. Screw penetration into the clutch housing must not exceed the depth specified in column "T₁". Concentricity of pilot diameter "D₃" to bore "d" is 0.025 T.I.R. max.

All slip clutches are designed for long life under continuous slip conditions. The useful life of these elements is a function of the transmitted torque and slip speed.



I

R

T

1

2

3

4

5

6

7

8

9

10

11

12

13

14

15

A

SPRING-WRAPPED SLIP CLUTCHES



COVERED BY U.S. PATENTS AND PATENTS PENDING

PHONE: 516.328.3300 • FAX: 516.326.8827 • WWW.SDP-SI.COM

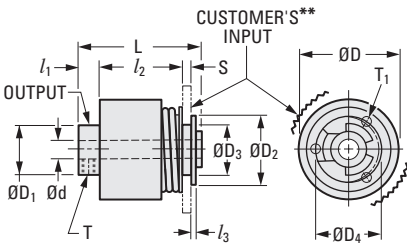


Fig. 1

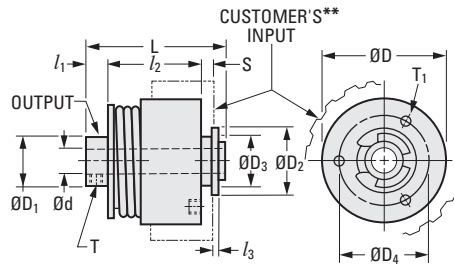


Fig. 2

METRIC COMPONENT

Catalog Number	Fig. No.	d Bore +0.025 0	D	L	l ₁	l ₂	S	l ₃	T Set Screw	D ₁ Max.	D ₂ Max.	D ₃ 0-0.025	D ₄	T ₁	Upper* Limit Torque N • m	Wt. g
S9940YMSWC16X03	1	3	16	26.7	4.57	18.29	2.03	0.76	M1.6	13	11.43	9.5	12.7	M2X3	0.064	26
S9940YMSWC16X04		4													± 0.007	
S9940YMSWC25X04		4													0.141	
S9940YMSWC25X06		6														
S9940YMSWC25X08	8	± 0.014	68													
S9940YMSWC32X06	6	31.75		35.3	5.84	23.88	3.3	1.02	M4	25.7	17.27	12.675	23.5	M2X3	0.339	117
S9940YMSWC32X08	8		± 0.035													
S9940YMSWC38X06	1	6	38.1	35.3	5.84	23.88	3.3	1.02	M4	25.7	17.27	12.675	23.5	M3X4	0.565	213
S9940YMSWC38X08		8								± 0.057						
S9940YMSWC48X06	1	6	47.5	42.4	6.35	30.48	3.3	1.02	M4	32	12.675	19.2	M3X4	0.847	355	
S9940YMSWC48X08		8								± 0.085						
S9940YMSWC48X10		10								1.059						
S9940YMSWC48X12		12									± 0.106					
S9940YMSWC57X06	2	6	57.15	47.8	7.37	34.04	3.3	1.02	M4	51.1	18.8	19.025	29.72	M3X4	1.695	582
S9940YMSWC57X08		8													± 0.170	
S9940YMSWC57X10		10													± 0.250	
S9940YMSWC57X12		12														
S9940YMSWC67X08	1	8	66.55	47.8	8.13	33.27	3.3	1.02	M5	51.1	18.8	19.025	29.72	M4X5	2.540	794
S9940YMSWC67X10		10													± 0.250	
S9940YMSWC67X12		12													± 0.340	
S9940YMSWC76X16		16														
S9940YMSWC76X19	1	19	76.2	58.4	—	50.17	5.72	1.17	M6	76.5	27.94	28.55	37.6	M2X3	3.390	993
S9940YMSWC76X20		20													± 0.340	

* or ** See Preceding Page

13-9
D805

REV:
4/25/23

1

R

T

1

2

3

4

5

6

7

8

9

10

11

12

13

14

15

A