

STAINLESS STEEL  
SINTERED BRONZE BEARINGS

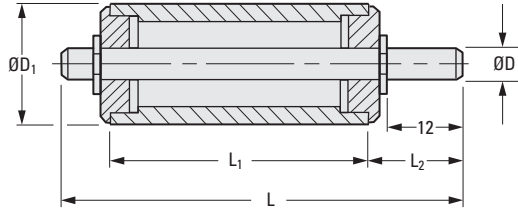
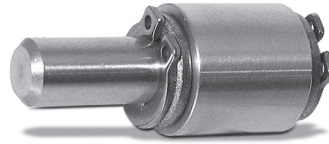
PHONE: 516.328.3300 • FAX: 516.326.8827 • WWW.SDP-SI.COM

**> MATERIAL:**

- Shaft** - 303 Stainless Steel
- Housing** - 303 Series Stainless Steel
- Bearings** - Sintered Bronze

**> SPECIFICATIONS:**

- Idlers with:
- 5 and 6 dia. shaft have a tolerance of -0.004/-0.012
- 8 dia. shaft have a tolerance of -0.005/-0.014



**METRIC COMPONENT**

Catalog Number	L	L <sub>1</sub>	L <sub>2</sub>	D Dia. g6	D <sub>1</sub> Dia.	Clearance Dia.
Δ S7AYPAM32120510	32	12	14.3	5	10	10.2
S7AYPAM32120512	32	12	14.3	5	12	12
Δ S7AYPAM32120612	32	12	15	6	12	14
S7AYPAM32120618	32	12	15	6	18	18
Δ S7AYPAM50250510	50	25	14.3	5	10	10.2
S7AYPAM50250512	50	25	14.3	5	12	12
S7AYPAM50250515	50	25	14.3	5	15	15
S7AYPAM50250618	50	25	15	6	18	18
S7AYPAM50250818	50	25	16.2	8	18	18
S7AYPAM50250820	50	25	16.2	8	20	20

Δ Retaining ring clearance diameter or bronze bearing flange diameter is larger than diameter "D<sub>1</sub>"

