

STANDARD DUTY
HEAVY-DUTY
SINGLE STRAND
RIVETED

PHONE: 516.328.3300 • FAX: 516.326.8827 • WWW.SDP-SI.COM



> MATERIAL:

Stainless Steel
Hardened Steel

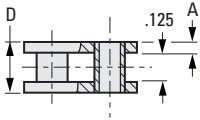


Fig. 1
Roller Connecting Link

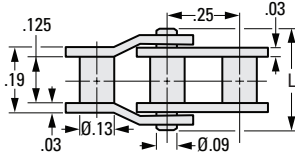


Fig. 2*
Standard-Duty Type Single Offset Connecting Link

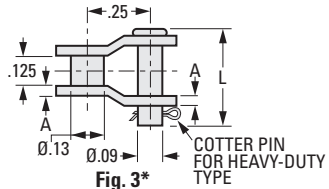


Fig. 3*
Heavy-Duty Type Single Offset Connecting Link

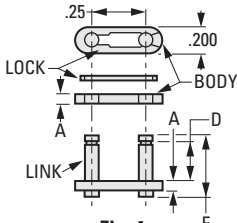
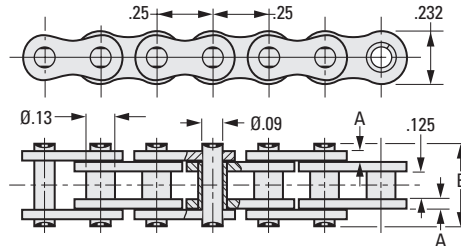


Fig. 4
Spring Clip Connecting Link



INCH COMPONENT

Catalog Number	Material	A Thickness	L Pin Length	D +.002 - .000	E	F	Tensile Load lbf	Weight Per Foot lb./ft.
Roller Chain - Standard-Duty Type - Priced Per Foot								
A 6Q 7-25	Hardened Steel	.03	.34	.19	.31	.33	787	.1
A 6Y 7-25	Stainless Steel						562	

Roller Chain (Ref.)	Material	Roller (Fig. 1)	Single Offset* (Fig. 2)	Spring Clip (Fig. 4)
Connecting Links - For Standard-Duty Type Roller Chain - Priced Per Piece				
A 6Q 7-25	Hardened Steel	A 6Q 7-25RL	—	A 6Q 7-25SCCL
A 6Y 7-25	Stainless Steel	A 6Y 7-25RL	A 6Y 7-25OSCLS	A 6Y 7-25SCCL

INCH COMPONENT

Catalog Number	Material	A Thickness	L Pin Length	D +.002 - .000	E	F	Tensile Load lbf	Weight Per Foot lb./ft.
Roller Chain - Heavy-Duty Type - Priced Per Foot								
A 6Q 7-H25	Hardened Steel	.039	.43	.21	.35	.38	1169	.107
A 6Y 7-H25	Stainless Steel						562	

Roller Chain (Ref.)	Material	Roller (Fig. 1)	Single Offset* (Fig. 3)	Spring Clip (Fig. 4)
Connecting Links - For Heavy-Duty Type Roller Chain - Priced Per Piece				
A 6Q 7-H25	Hardened Steel	A 6Q 7-H25RL	A 6Q 7-H25OSCLS	A 6Q 7-H25SCCL
A 6Y 7-H25	Stainless Steel	A 6Y 7-H25RL	A 6Y 7-H25OSCLS	A 6Y 7-H25SCCL

* To be discontinued when present stock is depleted.

I
R
T
1
2
3
4
5
6
7
8
9
10
11
12
13
14
15
16