

SIZE 18
 MOLDED
 .100 FACE

PHONE: 516.328.3300 • FAX: 516.326.8827 • WWW.SDP-SI.COM

► **MATERIAL:**

Ladder Chain - Galvanized Steel, Brass, High-Tensile
 Stainless Steel or Stainless Steel
Sprocket - Acetal, Black

► **SPECIFICATIONS:**

Bore is sized for press fit. Use straight
 knurl on shafting for maximum torques.

SDPSI • SDPSI • SDPSI

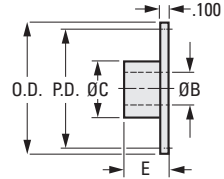
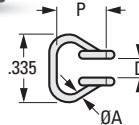


Fig. 1

Fig. 2

INCH COMPONENT

Catalog Number	Material	P Pitch	Links Per Foot	A Wire Dia.	D Inside Width	Yield Point lbf
Fig. 1 Ladder Chains - Priced Per Foot						
A 6C 8-18	Steel, Galvanized	.286	42	.0475	.130	40
A 6C88-18	High-Tensile Stainless Steel, 400 Series					75
A 6B 8-18	Brass					25
A 6Y 8-18	Stainless Steel, 300 Series					40

Catalog Number	No. of Teeth	P.D.	O.D.	B Bore Nom.	C Hub Dia.	E Length
Fig. 2 Sprockets						
A 6M 8-180808	8	.747	.94	1/4	.490	.35
A 6M 8-181008	10	.925	1.12		3/8	.625
A 6M 8-181412	14	1.284	1.47	1/4		.500
A 6M 8-181808	18	1.645	1.84		3/8	.625
A 6M 8-182012	20	1.826	2.02	1/4		.500
A 6M 8-182208	22	2.007	2.38		3/8	.625
A 6M 8-182212				1/4		.500
A 6M 8-182408	24	2.189	2.56	1/2	.750	.50
A 6M 8-182416					1/4	.500
A 6M 8-182508	25	2.280	2.47	1/4	.500	.40
A 6M 8-183008	30	2.733	2.92		1/2	.750
A 6M 8-183216	32	2.915	3.11	1/4		.500
A 6M 8-184016	40	3.641	3.83		1/2	.750
A 6M 8-184816	48	4.369	4.56			

