

SIZE 17
.170 FACE

PHONE: 516.328.3300 • FAX: 516.326.8827 • WWW.SDP-SI.COM

> **MATERIAL:**

Ladder Chain - Galvanized Steel, Brass, High-Tensile
Stainless Steel or Stainless Steel

Sprocket - Brass

> **SPECIFICATIONS:**

Sprockets with:
6 to 16 teeth have a #8-32 set screw
22 to 27 teeth have a #10-32 set screw

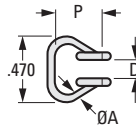
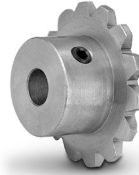


Fig. 1

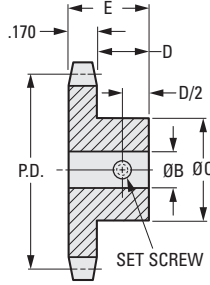


Fig. 2

INCH COMPONENT

Catalog Number	Material	P Pitch	Links Per Foot	A Wire Dia.	D Inside Width	Yield Point lbf
Fig. 1 Ladder Chains - Priced Per Foot						
A 6C 8-17	Steel, Galvanized	.353	34	.054	.190	50
A 6C88-17	High-Tensile Stainless Steel, 400 Series					95
A 6B 8-17	Brass					30
A 6Y 8-17	Stainless Steel, 300 Series					50

Catalog Number	No. of Teeth	P.D.	B Bore	E Length	C Hub Dia.	D Hub Proj.
Fig. 2 Sprockets						
A 6B 8-1706	6	.70	3/16	7/16	7/16	1/4
A 6B 8-1707	7	.80				
A 6B 8-1709	9	1.02	1/4	7/16	5/8	5/16
A 6B 8-1712	12	1.35				
A 6B 8-1716	16	1.78				
A 6B 8-1722	22	2.45	5/16	9/16	3/4	3/8
A 6B 8-1724	24	2.66				
A 6B 8-1727	27	3.00				

- I
- R
- T
- 1
- 2**
- 3
- 4
- 5
- 6
- 7
- 8
- 9
- 10
- 11
- 12
- 13
- 14
- 15
- 16