

FOR COMPRESSION LOADS OF 8 TO 16 lbf
 SHEAR LOADS OF 4.4 TO 9 lbf
 OIL-RESISTANT ELASTOMER

PHONE: 516.328.3300 • FAX: 516.326.8827 • WWW.SDP-SI.COM

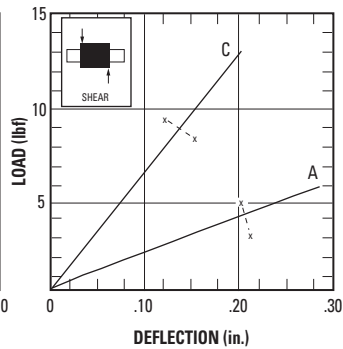
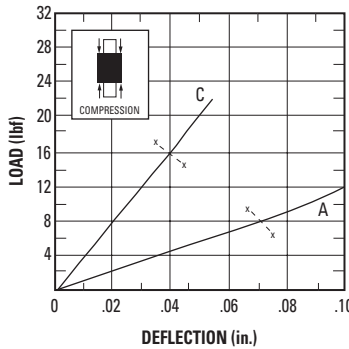
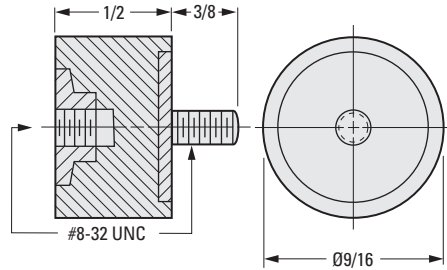
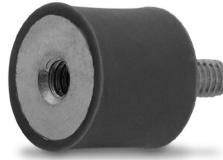


> MATERIAL:

Fastener - Hardened Steel, Zinc Plated
Isolator - Neoprene

> LOAD DEFLECTION GRAPHS:

Deflections below the line x-x are considered safe practice for static loads; data above that line are useful for calculating deflections under dynamic loads.



INCH COMPONENT CATALOG NUMBER

A 10 Z 2-304

Load Rating
 A or C

Compression		Forcing Frequency in Cycles per Minute									
Load Rating	Maximum Load lbf	1100	1250	1500	1750	2000	2250	2500	2750	3000	3600
		Minimum Load for 81% Isolation (lbf)									
A	8	—	—	—	—	6.2	4.8	4.0	3.2	2.7	2.0
C	16	—	—	—	—	—	—	14.0	11.6	9.6	6.8

Shear		Forcing Frequency in Cycles per Minute									
Load Rating	Maximum Load lbf	1100	1250	1500	1750	2000	2250	2500	2750	3000	3600
		Minimum Load for 81% Isolation (lbf)									
A	4.4	4.0	3.1	2.2	1.7	1.3	*	*	*	*	*
C	9	—	9.0	6.3	4.6	3.6	2.9	2.3	1.9	*	*

* At these forcing frequencies, lesser loads will yield less than 81% isolation.

