

➤ **MATERIAL:**

Acetal with PTFE

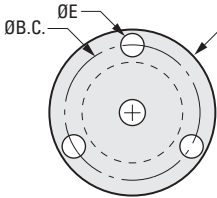
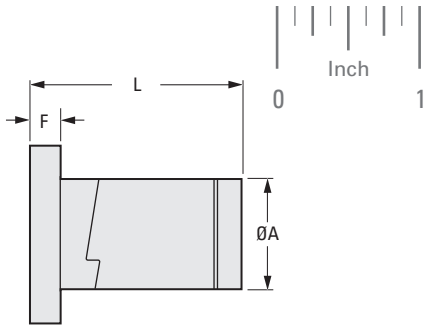
PHONE: 516.328.3300 • FAX: 516.326.8827 • WWW.SDP-SI.COM

➤ **TEMPERATURE RANGE:**

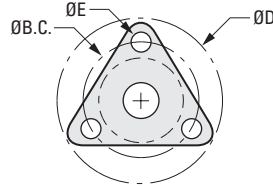
32° F to 180° F

➤ **FEATURES:**

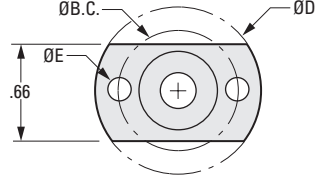
Reduced Drag.



7/16" AND 5/8" SCREWS



5/16" AND 3/8" SCREWS



1/4" SCREW ONLY

INCH COMPONENT

Catalog Number	Screw Size	Number of Starts	Lead in.	Efficiency %	O.D.	L Max.		
AB27FT-25201AB	1/4-20	1	.050	41	.64	1.180		
AB27FT-31084AB	5/16-8	4	.500	80	.82	1.875		
AB27FT-31122AB	5/16-12	2	.167	65				
AB27FT-37045AB	3/8-4	5	1.200	82				
AB27FT-37081AB	3/8-8	1	.125	53				
AB27FT-37084AB		4	.500	79				
AB27FT-37101AB	3/8-10	1	.100	49				
AB27FT-37102AB		2	.200	65				
AB27FT-37114AB	3/8-11	4	.375	75				
AB27FT-37121AB	3/8-12	1	.083	44				
AB27FT-37122AB		2	.167	60				
AB27FT-37161AB	3/8-16	1	.063	36			1.12	2.250
AB27FT-43082AB	7/16-8	2	.250	65				
AB27FT-43084AB		4	.500	76				
AB27FT-62081AB	5/8-8	1	.125	40	1.40	2.600		
AB27FT-62102AB	5/8-10	2	.200	51				

Catalog Number (Ref.)	D Dia.	E Dia.	F	B.C. Dia.	Design Load lbf	Drag Torque oz. in.
AB27FT-2501AB	1.19	.141	.16	.900	100	<1
AB27FT-31...	1.50	.200	.20	1.125	250	1-3
AB27FT-37...			.30	1.406	125	
AB27FT-43...	1.75	.220	.50	1.688	175	2-6
AB27FT-62...	2.13					

REV: 3.12.14 JC

