

> MATERIAL:

Bronze SAE 660

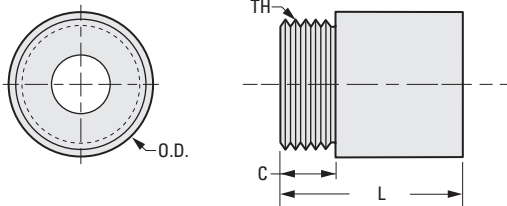
> TEMPERATURE RANGE:

-65° F to 250° F

> SPECIFICATIONS:

Friction Coefficient: .2 to .3

Lubrication is recommended.



INCH COMPONENT

Catalog Number	Screw Size	Number of Starts	Lead in.	Torque to Raise 1 lb. oz. in.	O.D.	L
AB20BN-25201	1/4-20	1	.050	.41	.750	.750
AB20BN-37101	3/8-10		.100	.67		
AB20BN-37121	3/8-12		.083	.64		
AB20BN-37161	3/8-16		.063	.61		
AB20BN-50101	1/2-10	2	.100	.83	1.000	1.000
AB20BN-50102			.200	1.10		
AB20BN-62081	5/8-8	stub		1.06	1.500	1.500
AB20BN-62101	5/8-10	1	.100	.99		
AB20BN-62102		2		1.26		
AB20BN-75061	3/4-6	1	.167	1.28	1.500	1.500
AB20BN-75101	3/4-10		.100	1.15		
AB20BN-10005	1-5		.200	1.67		
AB20BN-10008	1-8		.125	1.52		
AB20BN-10010	1-10		.100	1.47		

Catalog Number (Ref.)	C	TH	Design Load lbf	Max. Static Load lbf	Use with Flange
AB20BN-25...	.187	9/16-18	110	550	AB250F-025
AB20BN-37...	.250	5/8-18	300	1500	AB250F-037
AB20BN-50...	.375	15/16-16	620	3100	AB250F-050
AB20BN-62...			860	4300	
AB20BN-75...	.500	1-3/8-16	1500	1500	AB250F-075
AB20BN-100...			1900	9500	