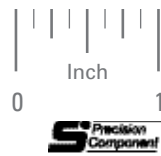


# SINGLE END FLEXI-HINGE



LIMITED ANGLE ROTARY APPLICATIONS  
 ZERO BACKLASH  
 LUBRICATION-FREE  
 CONSTANT LINEAR TORSIONAL SPRING RATE  
 OPERATES IN ALL ENVIRONMENTS  
 SELF-CENTERING WHEN LOAD IS REMOVED

PHONE: 516.328.3300 • FAX: 516.326.8827 • WWW.SDP-SI.COM



**> MATERIAL:**

400 Series Stainless Steel

**> OPERATING TEMPERATURE:**

-65°F to +350°F

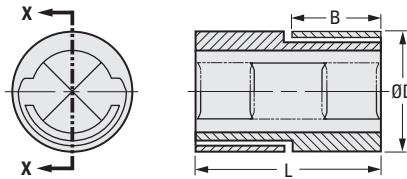
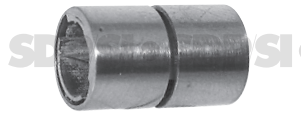
**> MAXIMUM ANGULAR TRAVEL FOR INDEFINITE LIFE:**

Series 10: ± 15°

Series 20: ± 7.5°

Series 30: ± 3.7°

The last two digits of the Catalog Number denotes the series.



SECTION X-X

**INCH COMPONENT**

Catalog Number	D O.D. +.0000 -.0005	L Length ± .003	B End Length min.	Spring Rate lbf in./ degree	Max. Load Capacity at Zero Deflection	
					Compression lbf	Tension lbf
S99FXS-012510	.1250	.200	.088	.0003	.95	3.80
S99FXS-012520				.0018	8.90	12.70
S99FXS-012530				.0148	25.30	25.30
S99FXS-015610	.1562	.250	.114	.0004	1.40	5.60
S99FXS-015620				.0037	13.70	19.60
S99FXS-015630				.0296	39.30	39.30
S99FXS-018710	.1875	.300	.136	.0007	2.00	7.80
S99FXS-018720				.0060	19.50	27.90
S99FXS-018730				.0482	55.80	55.80
S99FXS-025010	.2500	.400	.184	.0018	3.60	14.20
S99FXS-025020				.0148	35.00	50.00
S99FXS-025030				.1185	100.00	100.00
S99FXS-031210	.3125	.500	.232	.0037	5.70	22.80
S99FXS-031220				.0296	55.00	78.60
S99FXS-031230				.2367	157.10	157.10
S99FXS-037510	.3750	.600	.279	.0065	8.40	33.60
S99FXS-037520				.0482	79.10	113.00
S99FXS-037530				.4002	226.00	226.00
S99FXS-050010	.5000	.800	.374	.0148	14.40	57.40
S99FXS-050020				.1185	140.00	200.00
S99FXS-050030				.9486	400.00	400.00
S99FXS-062510	.6250	1.000	.469	.0296	23.00	92.00
S99FXS-062520				.2367	211.10	315.80
S99FXS-062530				1.8940	631.50	631.50
S99FXS-075010	.7500	1.200	.564	.0482	32.40	129.40
S99FXS-075020				.4002	317.20	453.10
S99FXS-075030				3.2610	906.10	906.10

