

› **MATERIAL:**

400 Series Stainless Steel

› **OPERATING TEMPERATURE:**

-65°F to +350°F

› **APPLICATIONS:**

Optical Mounts, Belt Tensioners, Linear Positioners, Lever Actuators and Sensitive Measuring Instruments.

Flexi-Hinge is a compact, versatile, easy-to-install device which requires no maintenance, offers indefinite life and is resistant to detrimental environmental conditions. Highly accurate, even after a lifetime of cycling, **Flexi-Hinges** offer the optimum solution for many of today's engineering problems.

The design utilizes crossed springs made to exacting tolerances of high-strength corrosion-resistant steel, capsuled in a cylindrical housing, to provide angular travel up to $\pm 30^\circ$. They are frictionless, require no lubrication, can function at limited angular travels indefinitely, are self-centering when unloaded, and have extremely low hysteresis. Lubrication migration and brinelling are eliminated.

Flexi-Hinges perform their function without maintenance within a wide temperature range, extreme vibration, dust, abrasive slurry, and even a vacuum.

› **MAXIMUM ANGULAR TRAVEL FOR INDEFINITE LIFE:**

Series 10: $\pm 15^\circ$

Series 20: $\pm 7.5^\circ$

Series 30: $\pm 3.7^\circ$

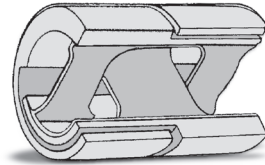
› **SPECIFICATIONS:**

Spring Rate Tolerance:

$\pm 10\%$ at Zero Load

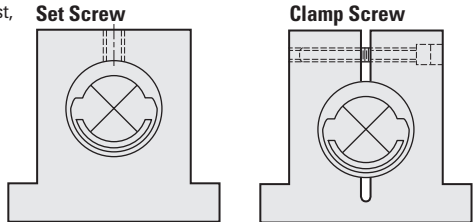
Mounting Hole:

.0005 to .0010 Larger than Flexi-Hinge O.D.

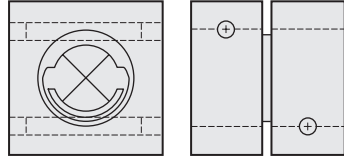


Cutaway view shows how crossed springs are situated within the two-part capsule.

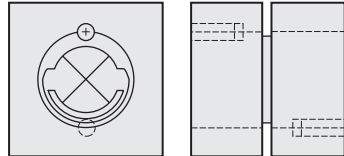
Mounting Methods:



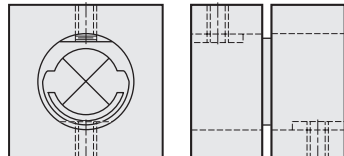
Radial Pins



Axial Pins

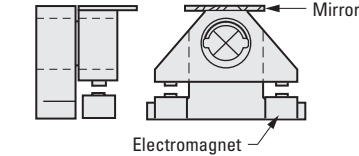
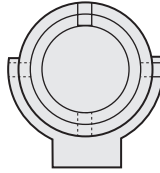


Locator Flats



GIMBALS

Free from backlash, friction and wear, Flexi-Hinges give the extreme accuracy needed for positioning precision optics.

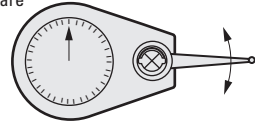


OSCILLATING MIRRORS

Optical scanners using Flexi-Hinges provide for the ultimate in cost-effective design. They allow for easy assembly and, with indefinite life expectancies, perform with undiminished accuracy.

GAGES / SENSORS

Miniature sizes which are free of error from backlash, friction or wear make Flexi-Hinges ideal for applications where positions must be accurately measured or outside forces sensed.



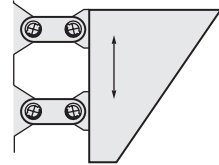
TENSIONERS

Belt or chain tensioning can be easily achieved through the use of Flexi-Hinges. Tolerant of hostile environments and not subject to wear, extreme long life can be expected without maintenance.



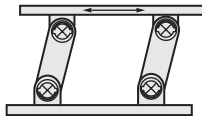
VIBRATING / SORTING MECHANISMS

A workhorse, capable of supporting heavy loads for years of continuous service without wear or deterioration, Flexi-Hinges are ideal for equipment such as vibrating hoppers operating in severe environments.



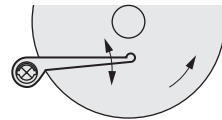
LINEAR POSITIONERS

Free of errors due to backlash, friction or wear, Flexi-Hinges mounted in suitable geometric structures can provide accurate linear movement or adjustment.



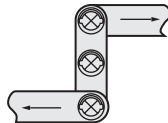
OPTICAL or MAGNETIC DISC READ / WRITE HEADS

With their constant, predictable spring rate, Flexi-Hinges are immune to the problems of starting vs. moving torque requirements of conventional bearings. Also, since they operate without backlash errors or wear, a lifetime of accurate performance can be expected.



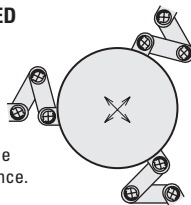
LEVEL ACTUATORS

Accurate motion requirements in areas of contamination, temperature extremes, or in a vacuum, can be easily provided through linkages utilizing Flexi-Hinge.



RESTRAINED or DAMPENED OSCILLATING MOTION

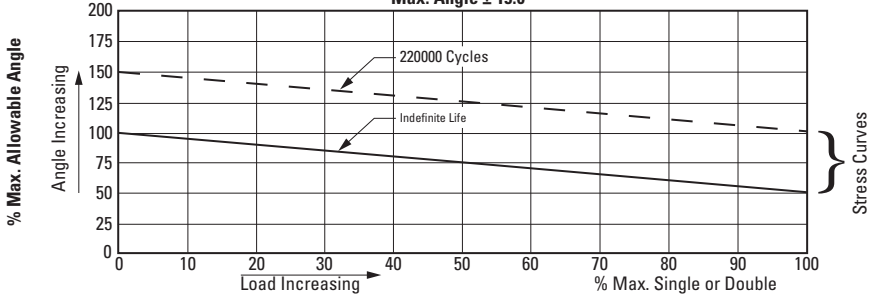
Eccentric or circular oscillating mechanisms can utilize Flexi-Hinge to provide centralizing and dampening actions for a lifetime of maintenance-free performance.



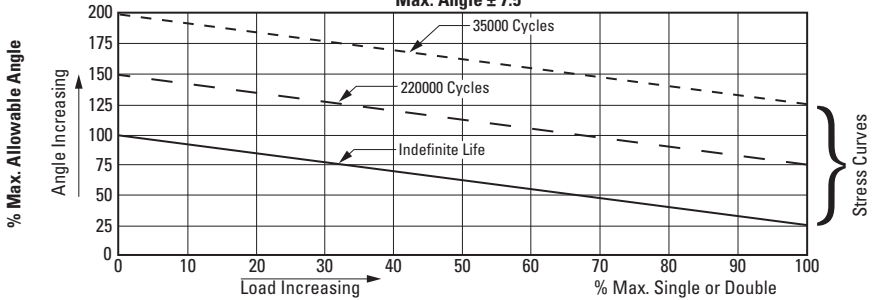
I
R
T
1
2
3
4
5
6
7
8
9
10
11
12
13
14
15
16



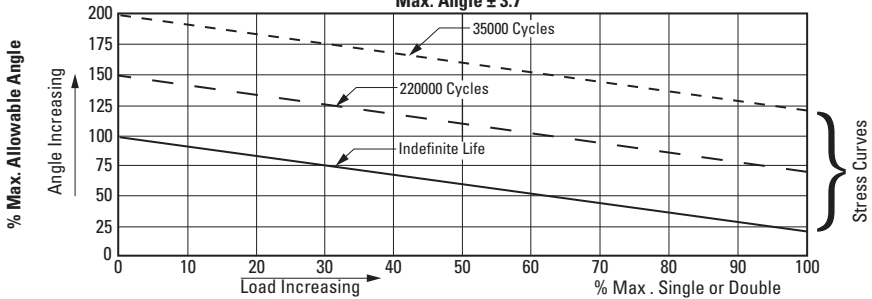
S99FX(D,S)-XXXX10 Series Bearings
Max. Angle $\pm 15.0^\circ$



S99FX(D,S)-XXXX20 Series Bearings
Max. Angle $\pm 7.5^\circ$



S99FX(D,S)-XXXX30 Series Bearings
Max. Angle $\pm 3.7^\circ$



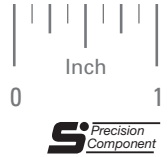
* Max. Angle of Deflection = The deflection angle from the null position. Positive or Negative.

DOUBLE END FLEXI-HINGE



LIMITED ANGLE ROTARY APPLICATIONS
 ZERO BACKLASH
 LUBRICATION-FREE
 CONSTANT LINEAR TORSIONAL SPRING RATE
 OPERATES IN ALL ENVIRONMENTS
 SELF-CENTERING WHEN LOAD IS REMOVED

PHONE: 516.328.3300 • FAX: 516.326.8827 • WWW.SDP-SI.COM



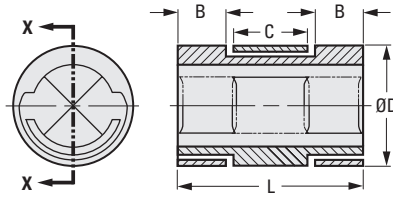
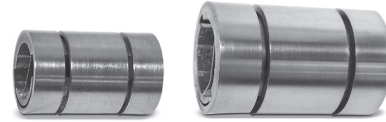
> MATERIAL:
 400 Series Stainless Steel

> OPERATING TEMPERATURE:
 -65°F to +350°F

**> MAXIMUM ANGULAR TRAVEL
 FOR INDEFINITE LIFE:**

- Series 10: ± 15°
- Series 20: ± 7.5°
- Series 30: ± 3.7°

The last two digits of the Catalog Number denotes the series.



SECTION X-X

INCH COMPONENT

Catalog Number	D O.D. +.0000 -.0005	L Length ± .003	B End Length min.	C Center Length min.	Spring Rate lbf in./ degree	Max. Load Capacity at Zero Deflection	
						Compression lbf	Tension lbf
S99FXD-012510	.1250	.200	.038	.070	.0003	2.30	4.60
S99FXD-012520	.1250	.200	.038	.070	.0018	17.50	25.00
S99FXD-012530	.1250	.200	.038	.070	.0148	28.00	28.00
S99FXD-015610	.1562	.250	.050	.100	.0004	3.50	7.00
S99FXD-015620	.1562	.250	.050	.100	.0037	28.00	40.00
S99FXD-015630	.1562	.250	.050	.100	.0296	45.00	45.00
S99FXD-018710	.1875	.300	.060	.120	.0007	5.00	10.00
S99FXD-018720	.1875	.300	.060	.120	.0060	40.00	60.00
S99FXD-018730	.1875	.300	.060	.120	.0482	63.00	63.00
S99FXD-025010	.2500	.400	.083	.165	.0018	9.00	18.00
S99FXD-025020	.2500	.400	.083	.165	.0148	70.00	100.00
S99FXD-025030	.2500	.400	.083	.165	.1185	115.00	115.00
S99FXD-031210	.3125	.500	.105	.210	.0037	14.00	28.00
S99FXD-031220	.3125	.500	.105	.210	.0296	110.00	150.00
S99FXD-031230	.3125	.500	.105	.210	.2367	175.00	175.00
S99FXD-037510	.3750	.600	.128	.255	.0065	20.00	40.00
S99FXD-037520	.3750	.600	.128	.255	.0482	160.00	220.00
S99FXD-037530	.3750	.600	.128	.255	.4002	250.00	250.00
S99FXD-050010	.5000	.800	.173	.345	.0148	35.00	70.00
S99FXD-050020	.5000	.800	.173	.345	.1185	280.00	380.00
S99FXD-050030	.5000	.800	.173	.345	.9486	450.00	450.00
S99FXD-062510	.6250	1.000	.210	.430	.0296	55.00	110.00
S99FXD-062520	.6250	1.000	.210	.430	.2367	450.00	620.00
S99FXD-062530	.6250	1.000	.210	.430	1.8940	700.00	700.00
S99FXD-075010	.7500	1.200	.263	.520	.0482	80.00	160.00
S99FXD-075020	.7500	1.200	.263	.520	.4002	630.00	900.00
S99FXD-075030	.7500	1.200	.263	.520	3.2610	1000.00	1000.00
S99FXD-100010	1.0000	1.600	.363	.720	.1185	140.00	280.00
S99FXD-100020	1.0000	1.600	.363	.720	.9486	1100.00	1500.00
S99FXD-100030	1.0000	1.600	.363	.720	7.8023	1800.00	1800.00