

NEOPRENE CYLINDRICAL MOUNTINGS • TO 60 lbf



FOR COMPRESSION LOADS OF 33 TO 60 lbf
 SHEAR LOADS OF 18 TO 34 lbf
 OIL-RESISTANT ELASTOMER

PHONE: 516.328.3300 • FAX: 516.326.8827 • WWW.SDP-SI.COM

► **MATERIAL:**

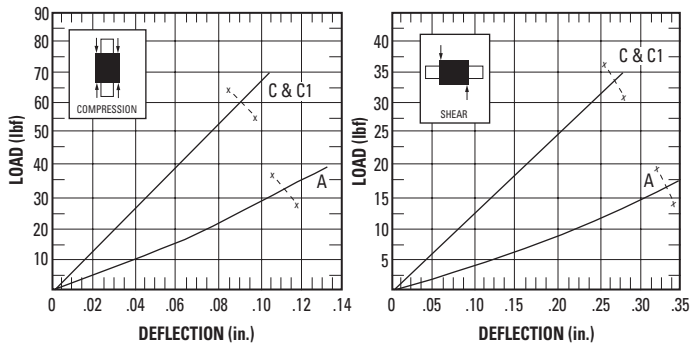
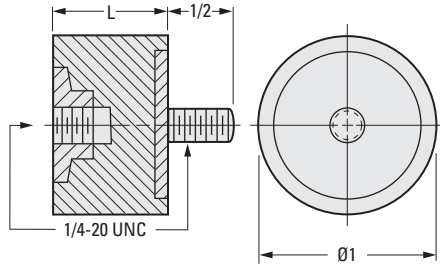
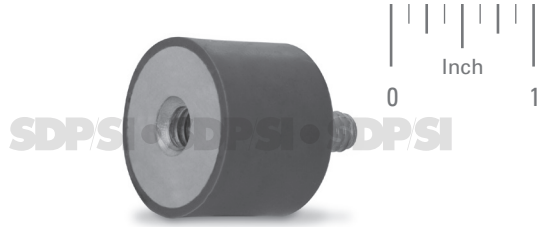
Fastener - Steel, Zinc Plated
Isolator - Neoprene

► **NOTE:**

Maximum unthreaded portion of stud does not exceed 1/16 inch.

► **LOAD DEFLECTION GRAPHS:**

Deflections below the line x-x are considered safe practice for static loads; data above that line are useful for calculating deflections under dynamic loads.



INCH COMPONENT CATALOG NUMBER

A 10Z 2-306

Load Rating
 A, C or C1

Compression			Forcing Frequency in Cycles per Minute									
Load Rating	L	Maximum Load lbf	850	1100	1250	1500	1750	2000	2250	2500	3000	3600
A	3/4	33	—	—	—	29.0	21.0	16.0	12.5	10.5	7.0	5.0
		60	—	—	—	49.0	37.0	29.5	24.0	17.0	11.5	
C	3/4											
C1	51/64											

Shear		Forcing Frequency in Cycles per Minute									
Load Rating	Maximum Load lbf	850	1100	1250	1500	1750	2000	2250	2500	3000	3600
A	18	16.0	9.3	7.2	5.0	3.8	2.8	2.3	2.3	1.2	*
C	34	—	24.5	20.0	14.7	11.2	9.0	7.5	7.5	4.5	3.5
C1											

* At these forcing frequencies, lesser loads will yield less than 81% isolation.

